


We Build This City

An architectural rendering of modern, multi-story buildings with glass facades and unique geometric shapes, set against a dark teal background with a white grid pattern.

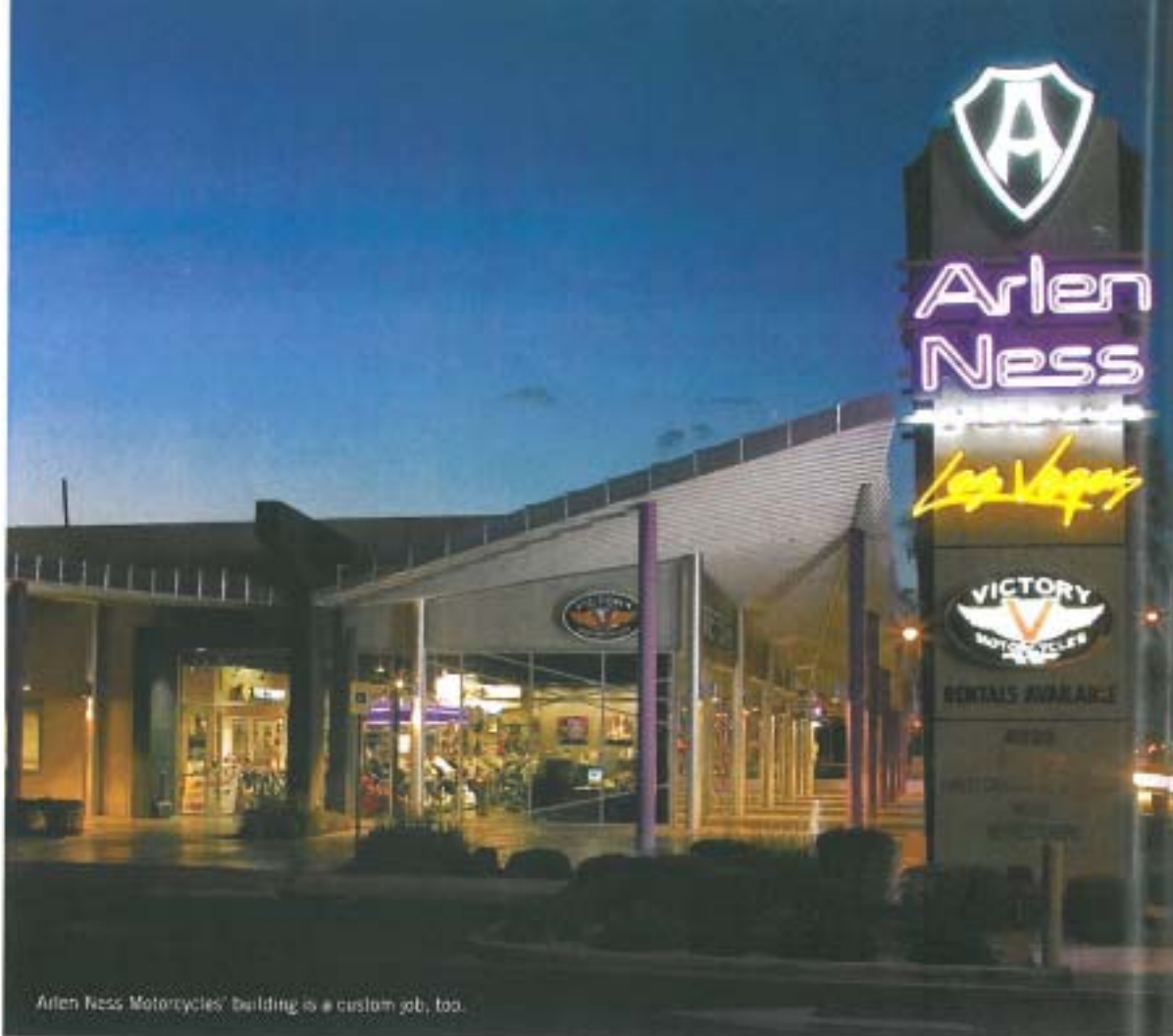
Our Strip silhouette changed forever with the opening of CityCenter, but look around: The cityscape we navigate in civilian life has been changing for years — often for the better. Over there, among the big-box malls and tract homes... is that a striking and original building rising from the blah? ¶ It is. Here's a sampling of the hot architecture of the new Vegas cityscape — explained by the architects designing it every day. ¶ Also, we pinched notoriously tough *L.A. Times* architecture critic Christopher Hawthorne really, really hard until he admitted he loves the Luxor. Read his confession on page 35.

DESIGNED BY:

Carpenter
Sellers Architects

LOOKS LIKE:

A giant, unfolded steel
fan embedded in the
side of a showroom



Arlen Ness Motorcycles' building is a custom job, too.

Custom bikes, custom building

Arlen Ness Motorcycles of Las Vegas
4020 Boulder Highway

Arlen Ness Motorcycles houses some gorgeous machinery in its more than 17,000 square feet of space, but the peacock element of the building's architecture is a custom steel canopy that turns the showroom into a roadside attraction. The canopy resembles a huge, open hand fan that unfolds around the southeast side of the building, protecting the custom motorcycles and scooters from the elements while creating an iconic structure. At night, the canopy reflects the glossy paint jobs of the merchandise and neon accents on the exterior.

Owner Dee Barnes wasn't sure what he wanted when he connected with Carpenter Sellers Architects. The location was an in-fill site across from Boulder Station, and Barnes was toying with the idea of a prefab building. "But they wanted something interesting," says Rick Sellers, principal/vice-president of Carpenter Sellers Associates. "They wanted to give it a decent face. One of the goals was to grab attention with the façade even though it was across from the casino." They also wanted to accentuate the bikes rather than compete with them.

The idea of the building as custom bike, a basic framework that is chopped and cut until it becomes a personal statement, began to fuel the discussions. They worked with galvalume, sheet steel coated with an aluminum-zinc alloy, for the canopy which attracts attention and draws it to the bikes below. Randomly angled mullions in the windows signify motion and the freedom to ride anywhere. "So the building came to reflect what these custom bikes are all about," says Sellers, "Accentuating them, complementing them, not taking away from them but enhancing this notion of freedom and the open road." — M.K.